

COVID-19 Epidemiology Surveillance Program
Monthly COVID-19 Report: October 2023
MMWR Week #40 – 44, Oct. 1 – Nov. 4, 2023

Division of Epidemiology & Public Health Preparedness (EPHP) 775-328-2447

Adam Vazquez, MPH, COVID-19 Epidemiologist AVazquez@nnph.org

Lissa Callahan, COVID-19 Statistician LCallahan@nnph.org

Weekly Summary*

Metrics	MMWR Week 40	MMWR Week 41	MMWR Week 42	MMWR Week 43	MMWR Week 44
Number of New Cases	242	244	233	212	156
New Cases per 100,000 Population	49	49	47	43	31
Hospitalizations**	27	26	17	14	13
Deaths**	1	2	2	0	0

*For definition and specifics on metrics summarized, please refer to corresponding sections.

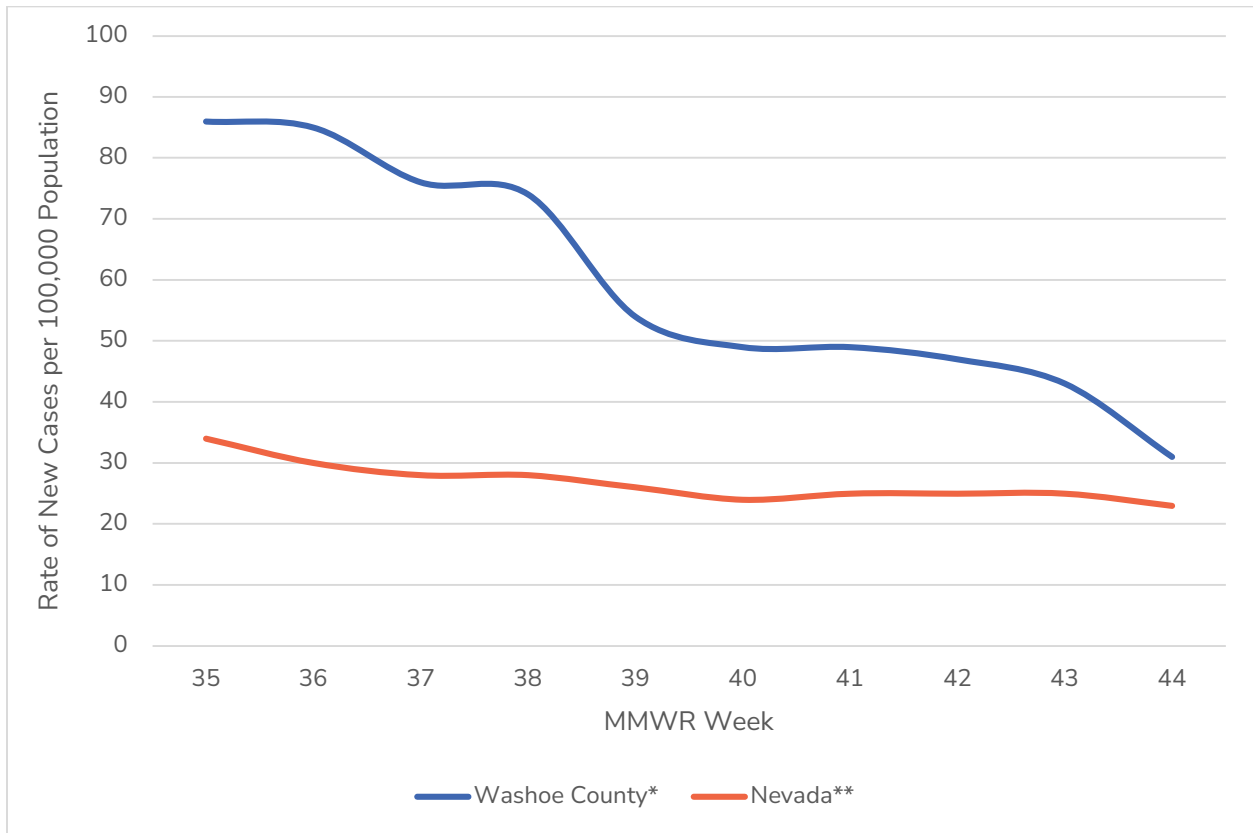
**Note: hospitalization and death totals for each week are subject to change as new reports are received on a daily basis and are often delayed, causing underreporting in more recent MMWR weeks.

Key Message(s)

- The number of cases reported in Washoe County decreased from 49 new cases per 100,000 population in MMWR week 40 to 31 new cases per 100,000 population in MMWR week 44.
- The qualification for up to date on vaccination status recently changed with the updated COVID vaccines. Sections and data using vaccination status have been removed from these monthly reports.

COVID-19 Case Information

Figure 1. Rate of New Cases Reported by MMWR Week, Washoe County and Nevada, 2023

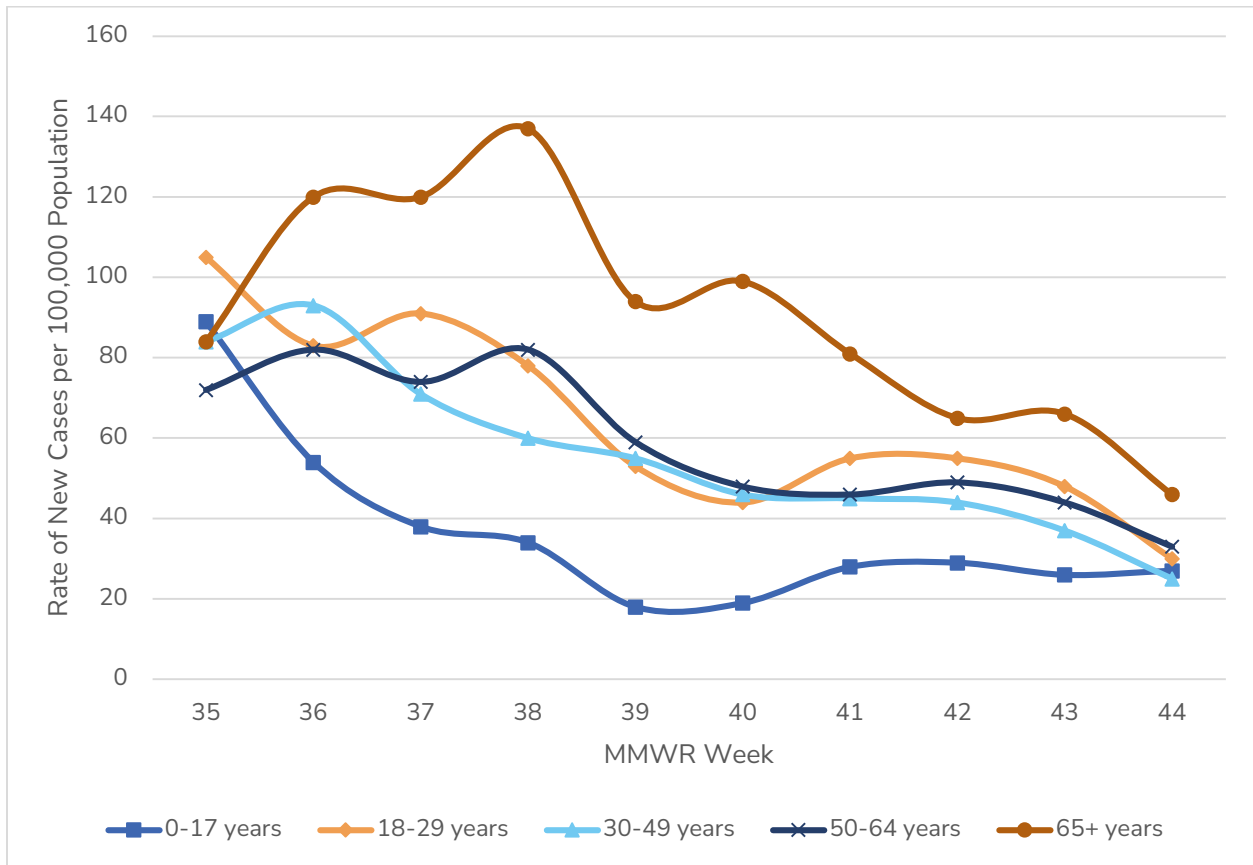


*Data source: Internal, NNPH

**Data Source: <https://nvhealthresponse.nv.gov/#covid-data-tracker>

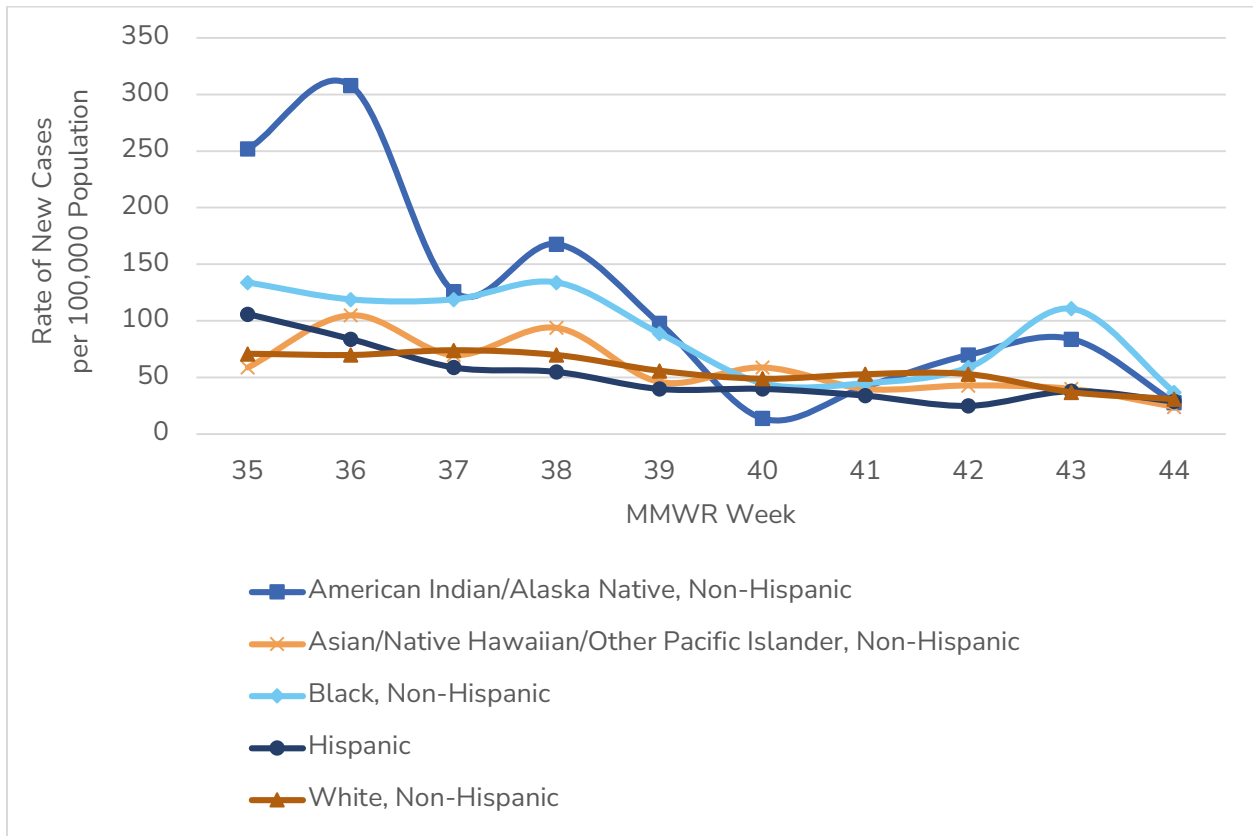
- In Washoe County, case counts decreased from a ten-week high of 86 new cases per 100,000 population in MMWR week 35 to 31 new cases per 100,000 population in MMWR week 44.
- In Nevada, case counts decreased from a ten-week high of 34 new cases per 100,000 population in MMWR week 35 to 23 new cases per 100,000 population in MMWR week 44.

Figure 2. Rate of New Cases Reported by Age Group and MMWR Week, Washoe County, 2023



- In MMWR week 35, the 18-29 age group had the highest case rate and the 50-64 age group had the lowest case rate.
- The 65+ age group consistently had the highest case rate from MMWR week 36 through MMWR week 44 with 46 new cases per 100,000 population in MMWR week 44.
- For MMWR week 36 through MMWR week 43, the 0-17 age group had the lowest case rate during various MMWR weeks and in MMWR week 44, the 30-49 age group had the lowest case rate.

Figure 3. Rate of New Cases Reported by Race/Ethnicity* and MMWR Week, Washoe County, 2023



*Note: From MMWR week 35 to MMWR week 44, 4.4% of cases were recorded as “Declined to answer”, “Multiple”, “Other”, or “Unknown” and rates per 100,000 population are unable to be calculated for those categories.

- In MMWR week 44, those who identified as Black, Non-Hispanic had the highest rate of new cases with 37 new cases per 100,000 population each.
- In MMWR week 44, those who identified as Asian/Native Hawaiian/Other Pacific Islander, Non-Hispanic had the lowest rate of new cases per 100,000 population with 24 new cases per 100,000 population.

Hospitalizations, ICU Status, & Deaths

COVID-19 hospitalizations are defined as those hospitalized for greater than or equal to 24 hours and have a positive SARS-CoV-2 laboratory test.

As of July 1, 2023, COVID-19-associated deaths include cases investigated for a confirmed SARS-CoV-2 infection and determined that COVID-19 was the cause of death or COVID-19 contributed to the cause of death and/or is specified on the death certificate as a cause of death. See current and previous full definitions in Glossary/Key Terms at the end of the report.

Table 1. Number and Percent of New Cases Reported by Age and Hospitalization Status, MMWR Weeks* 40 through 44, Washoe County, 2023

			Age Group				
			0-17	18-29	30-49	50-64	65+
MMWR Week	40	Total Cases	21	39	58	43	81
		% Hospitalized	4.8%	2.6%	3.4%	4.7%	25.9%
	41	Total Cases	30	49	57	42	66
		% Hospitalized	3.3%	4.1%	3.5%	7.1%	27.3%
	42	Total Cases	31	49	56	44	53
		% Hospitalized	3.2%	2.0%	1.8%	4.5%	22.6%
	43	Total Cases	28	43	47	40	54
		% Hospitalized	0.0%	0.0%	0.0%	5.0%	22.2%
	44	Total Cases	29	27	32	30	38
		% Hospitalized	3.4%	0.0%	3.1%	10.0%	21.1%

*Note: hospitalization totals for each week are subject to change as new reports are received on a daily basis and are often delayed, causing underreporting in more recent MMWR weeks.

- During MMWR weeks 40 through 44 the age group with the highest percentage of total cases resulting in hospitalization was the 65+ age group, with a high of 27.3% of cases hospitalized in MMWR week 41.

Table 2. Number and Percentage of Cases Reported by Hospitalization and ICU Status by MMWR Week*, Washoe County, 2023

MMWR Week	New Cases	Hospitalized		ICU	
		#	%	#	%
35	429	27	6.3	0	0.0
36	423	31	7.3	4	0.9
37	377	14	3.7	0	0.0
38	368	21	5.7	3	0.8
39	266	17	6.4	0	0.0
40	242	27	11.2	4	1.7
41	244	26	10.7	1	0.4
42	233	17	7.3	1	0.4
43	212	14	6.6	0	0.0
44	156	13	8.3	1	0.6

*Note: hospitalization and ICU totals for each week are subject to change as new reports are received on a daily basis and are often delayed, causing underreporting in more recent MMWR weeks.

Table 3. COVID-19 Deaths by Age Group and Time Period* of Death, Washoe County, 2020-2023

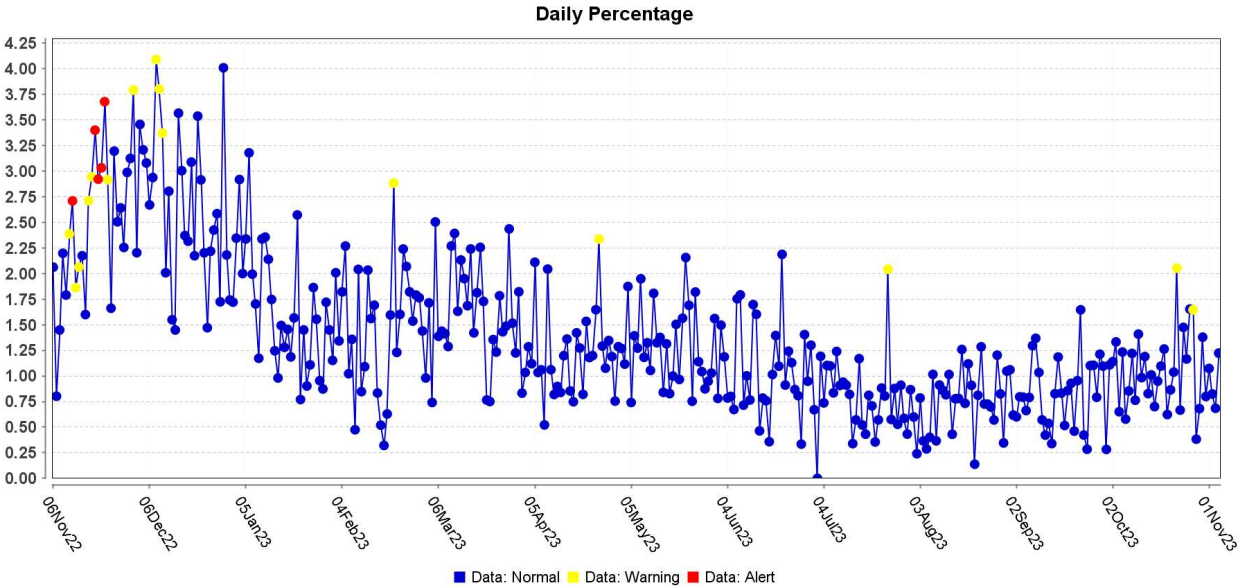
Time Period	Total Deaths	0-17 years	18-29 years	30-49 years	50-64 years	65+ years
2020 March - December	510	1	2	31	86	390
2021 Total	566	2	6	61	128	369
2022 Total	266	0	2	14	37	213
2023 January	6	0	0	0	1	5
2023 February	8	0	0	0	2	6
2023 March	8	0	0	0	0	8
2023 April	5	0	0	0	0	5
2023 May	2	0	0	0	0	2
2023 June	2	0	0	0	0	2
2023 July	0	0	0	0	0	0
2023 August	4	0	0	0	0	4
2023 September	10	0	0	3	0	7
2023 October	5	0	0	0	0	5

*Note: death totals are subject to change as new reports are received on a daily basis and are often delayed, causing underreporting in more recent months.

Surveillance Data

The percentage of persons indicating COVID-19 as the reason for visit to the Emergency Room (ER) is presented in Figure 4. The overlay below depicts COVID-19 in blue. Alerts appear as yellow and/or red dots. They indicate an unusually high percentage of COVID-19 visits according to ESSENCE algorithms.

Figure 4. Percentage of ER Visits Due to COVID in the Last Year, Washoe County



Data source: ESSENCE

Glossary/Key Terms

Data

Unless otherwise noted, data in this report are based on symptom onset date (when available or applicable), otherwise sample collection date is used. The Nevada State Demographer's data were used for population and demographics for Washoe County throughout this report.

COVID-19 Case

Coronavirus Disease 2019 (COVID-19) cases counted in this document are confirmed or probable cases as determined by meeting confirmatory laboratory evidence, clinical criteria, and/or epidemiologic linkage as defined on the CDC website here:

<https://ndc.services.cdc.gov/case-definitions/coronavirus-disease-2019-2021/>

COVID-19 Hospitalization

COVID-19 hospitalizations are counted as those hospitalized for greater than or equal to 24 hours and have a positive SARS-CoV-2 laboratory test.

As of October 2022, this includes any patient with a positive result on a SARS-CoV-2 laboratory test collected from 14 days before through three days after hospital admission.

- (<https://preparedness.cste.org/wp-content/uploads/2022/10/Interim-CSTE-Guidance-for-COVID-Hospitalization.pdf>)

COVID-19 Death

As of January 1, 2022, both Confirmed and Probable COVID-19-associated deaths are included in the count.

- (https://cdn.ymaws.com/www.cste.org/resource/resmgr/pdfs/pdfs2/20211222_interim-guidance.pdf)

Criteria for confirmed case death:

- The case meets the confirmed COVID-19 surveillance case definition, AND at least ONE of the following criteria is met:
- A case investigation determined that COVID-19 was the cause of death or contributed to the death.
- The death certificate indicates COVID-19 or an equivalent term as one of the causes of death, regardless of the time elapsed since specimen collection of the confirmatory laboratory test used to define the case.
- The death occurred within (and including) 30 days of specimen collection for the confirmatory laboratory test used to define the case and was due to natural causes (e.g., the Manner of Death is coded as "natural" on the death certificate.)

Criteria for probable case death:

- The case meets the probable COVID-19 case definition AND a case investigation determined that COVID-19 was the cause of death or contributed to the death; **OR**
- The case meets the probable COVID-19 surveillance case definition based on presumptive laboratory evidence AND death occurred within (and including) 30 days of specimen collection and was due to natural causes (e.g., the Manner of Death is coded as “natural” on the death certificate.); **OR**
- The case meets the probable COVID-19 surveillance case definition based on epidemiologic linkage and meeting clinical criteria, AND death occurred within (and including) 30 days of symptom onset and was due to natural causes (e.g., the Manner of Death is coded as “natural” on the death certificate.); **OR**
- The case meets the probable COVID-19 surveillance case definition based only on vital records criteria (i.e., a death certificate that lists COVID-19 disease or SARS-CoV-2 or an equivalent term as an underlying cause of death or a significant condition contributing to death and there is no confirmatory or presumptive laboratory evidence.)

As of July 1, 2023, in alignment with the CSTE laboratory criteria used to classify cases, COVID-19-associated deaths include:

- A case investigation for a confirmed SARS-CoV-2 infection determined that COVID-19 was the cause of death or contributed to the cause of death; **AND/OR**
- The death certificate lists a specific COVID-19 ICD code.

The previously used confirmed, probable, and suspected death classifications are discontinued.

Links

NNPH COVID Dashboard

<https://washoe.maps.arcgis.com/apps/dashboards/0db36fa8fa9c47758bc38210e4c23818>

NNPH website for COVID information and vaccine appointments

<https://covid19washoe.com/>

CDC COVID Data Tracker <https://covid.cdc.gov/covid-data-tracker/>

Department of Health and Human Services Nevada Division of Public and Behavioral Health (DPBH) Technical Bulletins https://dpbh.nv.gov/Resources/Technical_Bulletins-New/

NNPH COVID-19 Surveillance Report 2020-2022 <https://www.nnph.org/programs-and-services/ephp/statistics-surveillance-reports/index.php>

NNPH COVID reports <https://covid19washoe.com/daily-updates/washoe-county-covid-19-data-report/>